



REVISTA INCLUSIONES

NUEVOS AVANCES Y MIRADAS DE LA CIENCIA

Revista de Humanidades y Ciencias Sociales

Número Especial Julio / Septiembre

2019

ISSN 0719-4706

CUERPO DIRECTIVO

Directores

Dr. Juan Guillermo Mansilla Sepúlveda

Universidad Católica de Temuco, Chile

Dr. Francisco Ganga Contreras

Universidad de Los Lagos, Chile

Subdirectores

Mg © Carolina Cabezas Cáceres

Universidad de Las Américas, Chile

Dr. Andrea Mutolo

Universidad Autónoma de la Ciudad de México, México

Editor

Drdo. Juan Guillermo Estay Sepúlveda

Editorial Cuadernos de Sofía, Chile

Editor Científico

Dr. Luiz Alberto David Araujo

Pontificia Universidade Católica de Sao Paulo, Brasil

Editor Brasil

Drdo. Maicon Herverton Lino Ferreira da Silva

Universidade da Pernambuco, Brasil

Editor Ruropa del Este

Dr. Alekzandar Ivanov Katrandhiev

Universidad Suroeste "Neofit Rilski", Bulgaria

Cuerpo Asistente

Traductora: Inglés

Lic. Pauline Corthorn Escudero

Editorial Cuadernos de Sofía, Chile

Traductora: Portugués

Lic. Elaine Cristina Pereira Menegón

Editorial Cuadernos de Sofía, Chile

Portada

Sr. Felipe Maximiliano Estay Guerrero

Editorial Cuadernos de Sofía, Chile

COMITÉ EDITORIAL

Dra. Carolina Aroca Toloza

Universidad de Chile, Chile

Dr. Jaime Bassa Mercado

Universidad de Valparaíso, Chile

Dra. Heloísa Bellotto

Universidad de Sao Paulo, Brasil

Dra. Nidia Burgos

Universidad Nacional del Sur, Argentina

Mg. María Eugenia Campos

Universidad Nacional Autónoma de México, México

Dr. Francisco José Francisco Carrera

Universidad de Valladolid, España

Mg. Keri González

Universidad Autónoma de la Ciudad de México, México

Dr. Pablo Guadarrama González

Universidad Central de Las Villas, Cuba

Mg. Amelia Herrera Lavanchy

Universidad de La Serena, Chile

Mg. Cecilia Jofré Muñoz

Universidad San Sebastián, Chile

Mg. Mario Lagomarsino Montoya

Universidad Adventista de Chile, Chile

Dr. Claudio Llanos Reyes

Pontificia Universidad Católica de Valparaíso, Chile

Dr. Werner Mackenbach

Universidad de Potsdam, Alemania

Universidad de Costa Rica, Costa Rica

Mg. Rocío del Pilar Martínez Marín

Universidad de Santander, Colombia

Ph. D. Natalia Milanesio

Universidad de Houston, Estados Unidos

Dra. Patricia Virginia Moggia Münchmeyer

Pontificia Universidad Católica de Valparaíso, Chile

Ph. D. Maritza Montero

Universidad Central de Venezuela, Venezuela

Dra. Eleonora Pencheva

Universidad Suroeste Neofit Rilski, Bulgaria

Dra. Rosa María Regueiro Ferreira

Universidad de La Coruña, España

Mg. David Ruete Zúñiga

Universidad Nacional Andrés Bello, Chile

Dr. Andrés Saavedra Barahona

Universidad San Clemente de Ojrid de Sofía, Bulgaria

Dr. Efraín Sánchez Cabra
Academia Colombiana de Historia, Colombia

Dra. Mirka Seitz
Universidad del Salvador, Argentina

Ph. D. Stefan Todorov Kapralov
South West University, Bulgaria

COMITÉ CIENTÍFICO INTERNACIONAL

Comité Científico Internacional de Honor

Dr. Adolfo A. Abadía
Universidad ICESI, Colombia

Dr. Carlos Antonio Aguirre Rojas
Universidad Nacional Autónoma de México, México

Dr. Martino Contu
Universidad de Sassari, Italia

Dr. Luiz Alberto David Araujo
Pontificia Universidad Católica de Sao Paulo, Brasil

Dra. Patricia Brogna
Universidad Nacional Autónoma de México, México

Dr. Horacio Capel Sáez
Universidad de Barcelona, España

Dr. Javier Carreón Guillén
Universidad Nacional Autónoma de México, México

Dr. Lancelot Cowie
Universidad West Indies, Trinidad y Tobago

Dra. Isabel Cruz Ovalle de Amenabar
Universidad de Los Andes, Chile

Dr. Rodolfo Cruz Vadillo
Universidad Popular Autónoma del Estado de Puebla, México

Dr. Adolfo Omar Cueto
Universidad Nacional de Cuyo, Argentina

Dr. Miguel Ángel de Marco
Universidad de Buenos Aires, Argentina

Dra. Emma de Ramón Acevedo
Universidad de Chile, Chile

Dr. Gerardo Echeita Sarrionandia
Universidad Autónoma de Madrid, España

Dr. Antonio Hermosa Andújar
Universidad de Sevilla, España

Dra. Patricia Galeana
Universidad Nacional Autónoma de México, México

Dra. Manuela Garau
Centro Studi Sea, Italia

Dr. Carlo Ginzburg Ginzburg
Scuola Normale Superiore de Pisa, Italia
Universidad de California Los Ángeles, Estados Unidos

Dr. Francisco Luis Girardo Gutiérrez
Instituto Tecnológico Metropolitano, Colombia

José Manuel González Freire
Universidad de Colima, México

Dra. Antonia Heredia Herrera
Universidad Internacional de Andalucía, España

Dr. Eduardo Gomes Onofre
Universidade Estadual da Paraíba, Brasil

Dr. Miguel León-Portilla
Universidad Nacional Autónoma de México, México

Dr. Miguel Ángel Mateo Saura
Instituto de Estudios Albacetenses "Don Juan Manuel", España

Dr. Carlos Tulio da Silva Medeiros
Diálogos em MERCOSUR, Brasil

+ Dr. Álvaro Márquez-Fernández
Universidad del Zulia, Venezuela

Dr. Oscar Ortega Arango
Universidad Autónoma de Yucatán, México

Dr. Antonio-Carlos Pereira Menaut
Universidad Santiago de Compostela, España

Dr. José Sergio Puig Espinosa
Dilemas Contemporáneos, México

Dra. Francesca Randazzo
Universidad Nacional Autónoma de Honduras, Honduras

Dra. Yolando Ricardo

Universidad de La Habana, Cuba

Dr. Manuel Alves da Rocha

Universidade Católica de Angola Angola

Mg. Arnaldo Rodríguez Espinoza

Universidad Estatal a Distancia, Costa Rica

Dr. Miguel Rojas Mix

*Coordinador la Cumbre de Rectores Universidades
Estatales América Latina y el Caribe*

Dr. Luis Alberto Romero

CONICET / Universidad de Buenos Aires, Argentina

Dra. Maura de la Caridad Salabarría Roig

Dilemas Contemporáneos, México

Dr. Adalberto Santana Hernández

Universidad Nacional Autónoma de México, México

Dr. Juan Antonio Seda

Universidad de Buenos Aires, Argentina

Dr. Saulo Cesar Paulino e Silva

Universidad de Sao Paulo, Brasil

Dr. Miguel Ángel Verdugo Alonso

Universidad de Salamanca, España

Dr. Josep Vives Rego

Universidad de Barcelona, España

Dr. Eugenio Raúl Zaffaroni

Universidad de Buenos Aires, Argentina

Dra. Blanca Estela Zardel Jacobo

Universidad Nacional Autónoma de México, México

Comité Científico Internacional

Mg. Paola Aceituno

Universidad Tecnológica Metropolitana, Chile

Ph. D. María José Aguilar Idañez

Universidad Castilla-La Mancha, España

Dra. Elian Araujo

Universidad de Mackenzie, Brasil

Mg. Romyana Atanasova Popova

Universidad Suroeste Neofit Rilski, Bulgaria

Dra. Ana Bénard da Costa

Instituto Universitario de Lisboa, Portugal

Centro de Estudos Africanos, Portugal

Dra. Alina Bestard Revilla

*Universidad de Ciencias de la Cultura Física y el
Deporte, Cuba*

Dra. Noemí Brenta

Universidad de Buenos Aires, Argentina

Dra. Rosario Castro López

Universidad de Córdoba, España

Ph. D. Juan R. Coca

Universidad de Valladolid, España

Dr. Antonio Colomer Vialdel

Universidad Politécnica de Valencia, España

Dr. Christian Daniel Cwik

Universidad de Colonia, Alemania

Dr. Eric de Léséulec

INS HEA, Francia

Dr. Andrés Di Masso Tarditti

Universidad de Barcelona, España

Ph. D. Mauricio Dimant

Universidad Hebrea de Jerusalén, Israel

Dr. Jorge Enrique Elías Caro

Universidad de Magdalena, Colombia

Dra. Claudia Lorena Fonseca

Universidad Federal de Pelotas, Brasil

Dra. Ada Gallegos Ruiz Conejo

Universidad Nacional Mayor de San Marcos, Perú

Dra. Carmen González y González de Mesa

Universidad de Oviedo, España

Ph. D. Valentin Kitanov

Universidad Suroeste Neofit Rilski, Bulgaria

Mg. Luis Oporto Ordóñez

Universidad Mayor San Andrés, Bolivia

Dr. Patricio Quiroga

Universidad de Valparaíso, Chile

Dr. Gino Ríos Patio

Universidad de San Martín de Porres, Per

Dr. Carlos Manuel Rodríguez Arrechavaleta

Universidad Iberoamericana Ciudad de México, México

Dra. Vivian Romeu

Universidad Iberoamericana Ciudad de México, México

Dra. María Laura Salinas

Universidad Nacional del Nordeste, Argentina

Dr. Stefano Santasilia

Universidad della Calabria, Italia

Mg. Silvia Laura Vargas López

Universidad Autónoma del Estado de Morelos, México

Dra. Jaqueline Vassallo

Universidad Nacional de Córdoba, Argentina

Dr. Evandro Viera Ouriques

Universidad Federal de Río de Janeiro, Brasil

Dra. María Luisa Zagalaz Sánchez

Universidad de Jaén, España

Dra. Maja Zawierzeniec

Universidad Wszechnica Polska, Polonia

Editorial Cuadernos de Sofía

Santiago – Chile

Representante Legal

Juan Guillermo Estay Sepúlveda Editorial

Indización, Repositorios y Bases de Datos Académicas

Revista Inclusiones, se encuentra indizada en:





REX



BIBLIOTECA UNIVERSIDAD DE CONCEPCIÓN

**DETERMINATION OF LEAKS IN THE MAIN:
PIPELINE BY “PRESSURE WAVE”**

Liya H. Fokeeva

Kazan Federal University, Russia

Vilena Zainyllina

Kazan Federal University, Russia

Fecha de Recepción: 16 de marzo de 2019 – **Fecha Revisión:** 02 de abril de 2019

Fecha de Aceptación: 23 de junio de 2019 – **Fecha de Publicación:** 01 de julio de 2019

Abstract

This paper describes a method for determining the coordinates of leakage and mass flow, based on the change in pressure over time in the cross-section of the linear part of the main pipeline. Two possible cases of pressure drop are considered: with constant pressure at the end of the pipeline and with a changing pressure at the end of the pipeline. Based on a mathematical model describing the flow of a fluid in a pipeline with leakage, as well as using the Fourier transform, parameters of the oil product and the pipeline, calculation formulas were obtained to determine the parameters of the leakage from the pipeline.

Keywords

Leakage – Main pipeline – Pressure sensor – Leakage control – Pressure wave

Para Citar este Artículo:

Fokeeva, Liya H. y Zainyllina, Vilena. Determination of leaks in the main: pipeline by “pressure wave”. Revista Inclusiones Vol: 6 num Esp Jul-Sep (2019): 218-228.

Introduction

The main reason for the leakage of the main pipelines is long service life. Most of the pipelines have a life of more than 20 years. As they age, they begin to fail, there are leaks in structurally weak joints, corrosion points in areas with slight structural damage to the material. Leaks can occur through seals in pumps and valves. Also important is the problem of unauthorized tie-ins to the linear part of the pipeline to steal oil products¹. The main task of leak detection systems (SDAs) is to identify the fact of a leak and determine its location. The LDS provides for the generation of an alarm signal about the possible presence of a leak and the display of information that helps to decide on the presence or absence of leaks.

Pipeline leak detection systems are of great importance for pipelines operation, as they allow to reduce pipeline downtime².

Detection of leaks from the pipeline is a rather complicated technical task, the solution of which requires special equipment and a professional approach. The appearance of even the smallest leakage may indirectly cause another, more serious accident, such as an explosion of released gas, as well as a pipeline rupture, which increases repair costs. It follows that it is economically advantageous to detect leaks at an early stage of their appearance³. In this paper, a mathematical model for a method for detecting leaks from a pressure wave and checking the applicability of this model in a short section of the main pipeline.

Methods

The method of negative pressure waves (estimated parameter) is based on the phenomenon of a discharge wave at the moment of leakage. Discharge waves propagate on both sides of the leak and are recorded by the equipment. The accuracy of the method strongly depends on the hydrodynamic noise in the pipeline, on the magnitude of the leak. Also, when the flow discontinuity or the presence of gas bubbles, the velocity of propagation of the pressure of the vacuum pressure wave decreases, as a result of which the signal will be blocked or will carry inaccurate information. All existing parametric SOU is not without drawbacks. Taking into account modern safety requirements, the use of only parametric SOU by companies involved in the transportation of oil, gas and petroleum products is insufficient. Accordingly, the main requirement for the LDS is its accuracy, provided by an integrated approach, i.e. using a group of leak detection methods based on various physical principles, both methods of periodic and continuous monitoring.

The pressure wave method is based on the analysis of transient processes in pipelines in the event of a leak. At the time of occurrence of leakage of fluid in the pipeline, there are discharging waves, propagating to the ends of the pipeline with the speed of sound. Pressure sensors installed at the ends of the pipeline, record the time of arrival of the pressure wave. The use of double pressure

¹ A. F. Bulatov and A. G. Lyutov, Bulletin USATU (Ufa: USATU, 2013).

² A. S. Volkov; I. E. Volkova and P. A. Zemskov, "Proceedings of NSTU. R. bE. Alekseeva", N. Novgorod Vol: 5 num 107 (2014): 166-170.

³ V. A. Belyaeva, Oil and gas construction. Under total (Moscu: OMEGA-L., 2008).

sensors at the ends of the diagnosed section of the pipeline allows determining the direction of the pressure wave and ignoring those detected pressure waves that came from outside the protected area of the section. The implementation of the method is divided into two parts. The first part of the method is performed in the controller, ensuring that the pipeline pressure is monitored in real time. The second part, at the top level of the system, provides an analysis of the recorded pressure waves for leaks. This distinction has reduced the load on the data transmission channel and save server resources. The computational procedure processes the results of the incoming information, taking into account: the sequence of incoming signals, the distance between the pressure sensors, the speed of propagation of sound waves, etc. The difference (t_1-t_2) of the moments of arrival of the waves indicates the displacement of the place of leakage relative to the middle of the considered section⁴. It is assumed that the oil pipeline between oil pumping stations is a straight-line segment of equal diameter, filled with liquid, without additional inserts and outlets. The length of the pipeline with fixed coordinates are two pressure sensors at a certain height.

Figure 1 shows a schematic of a method for monitoring leaks in a section of a trunk pipeline.

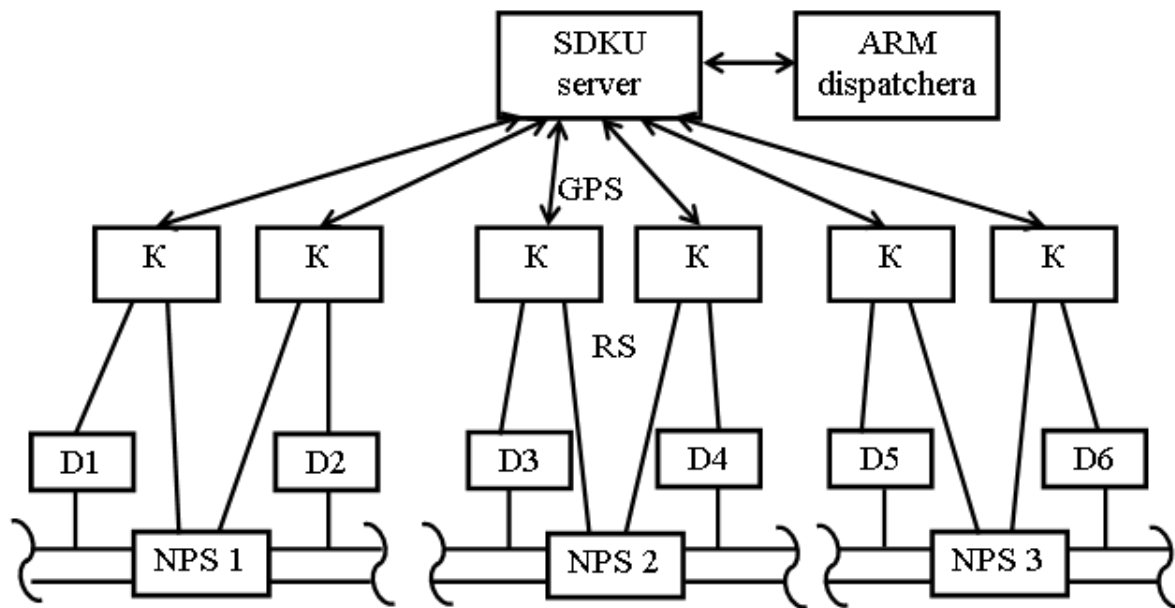


Fig. 1
Leak detection circuit

To solve this problem of leak detection, two possible cases of pressure drop were considered: with constant pressure at the end of the pipeline (Figure 2), with varying pressure at the end of the pipeline (Figure 3).

⁴ S. E. Kutukov, "The problem of increasing the sensitivity, reliability, and speed of leak detection systems in pipelines". Oil and Gas Business Vol: 2 (2004): 29-45.

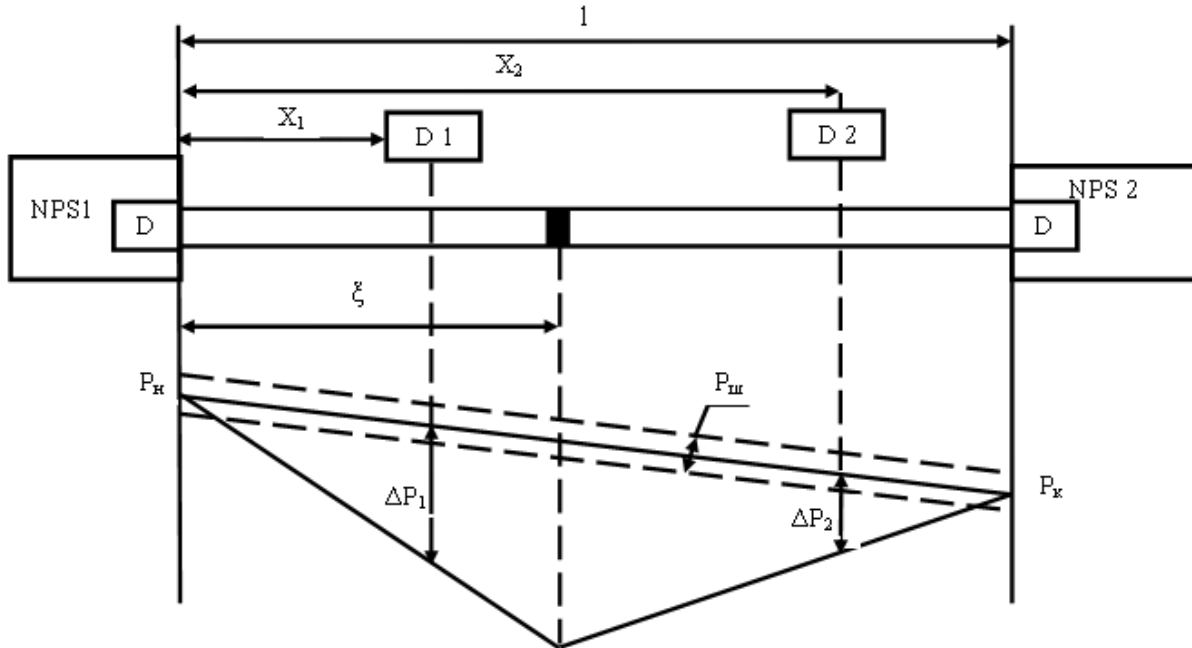


Fig. 2.

Leak detection method at the constant outlet pressure

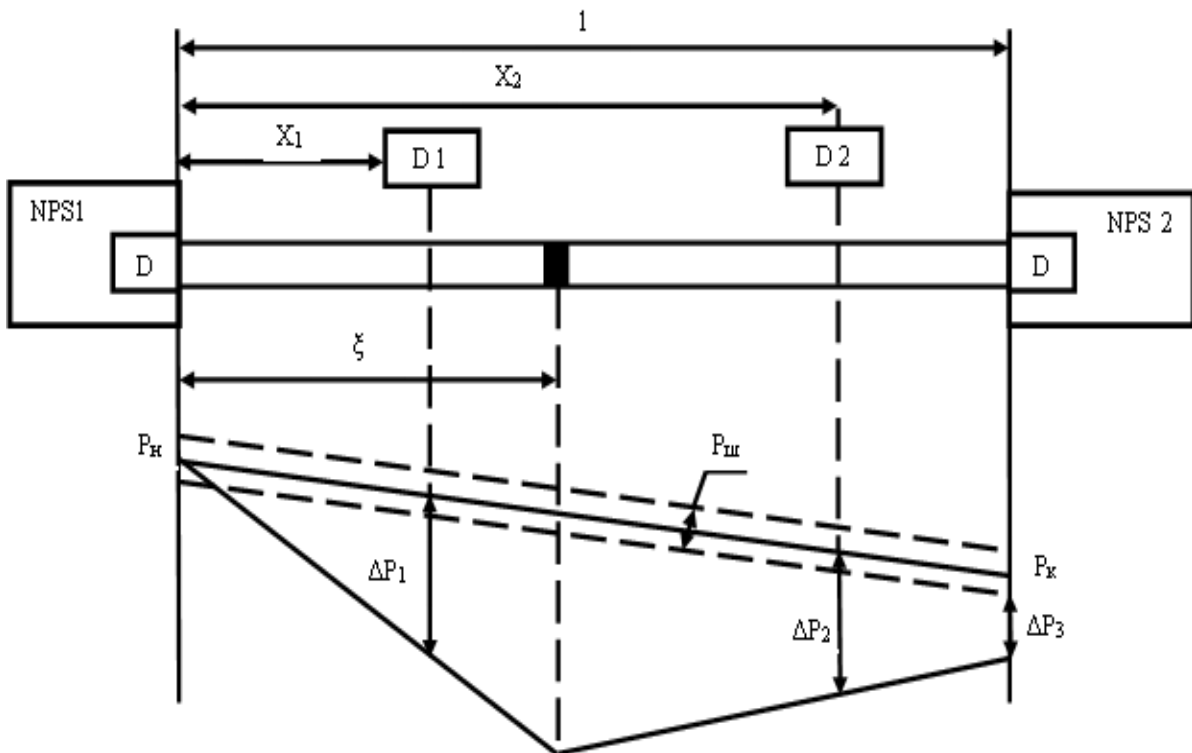


Fig. 3

Leak detection method when changing outlet pressure

The characteristics of the method depend on the dynamic characteristics of the sensors (D), the level of noise ($P_{ш}$), the ability of the controller to process information with the necessary speed (0.01 sec), the accuracy of determining the speed of sound (s).

A mathematical model in the form of a differential equation and single-valued conditions describing the flow of a fluid in an oil pipeline with a leak has the form:

$$\frac{dp}{dt} = \tau \cdot \frac{d^2p}{dx^2} - \frac{c^2}{S} \cdot \sigma \cdot \delta(x - \varepsilon) \quad (1)$$

$$\tau = \frac{c^2}{b}, b = \frac{\lambda \cdot \omega}{2d} \quad (2)$$

$$p(0, x) = p_H - \frac{p_H - p_K}{l} \cdot x \text{ при } x = 0 \quad p = p_H, \text{ при } x = l \quad p = p_K \quad (3)$$

where: p – line pressure (Pa), t – time (s), x - distance to the sensor (m), c - wave propagation velocity in the pipeline (m / s), λ – pipeline drag coefficient, ω – oil product speed (m / s), ε – Leakage Coordinate (m), σ – mass flow rate of the fluid (kg / s), l and d is the length and diameter of the pipeline (m), S is the cross-sectional area of the pipeline (m²) ,.

Based on the solution of equations (1) and (3), using the Fourier transform, the parameters of the oil product and the pipeline, as well as the data obtained from pressure sensors, calculation formulas were obtained to determine the parameters of pipeline leakage:

$$\varepsilon = \frac{lK}{(l - x_2) \left(p_1 - p_H - \frac{x_1}{l} (p_K - p_H) \right) + \left(z_1 - z_2 - \frac{x_1}{l} (z_K - z_H) \right) \cdot \rho g} + K \quad (4)$$

$$\sigma = \frac{F(K - l + x_2)}{l \cdot 2\alpha \cdot x_1 (l - x_2) \cdot \rho g} \left(p_1 - p_H - \frac{x_1}{l} (p_K - p_H) + \left(z_1 - z_2 - \frac{x_1}{l} (z_K - z_H) \right) \cdot \rho g \right) \quad (5)$$

$$K = x_1 \left(p_2 - p_H - \frac{x_2}{l} (p_K - p_H) + \left(z_2 - z_1 - \frac{x_2}{l} (z_K - z_H) \right) \cdot \rho g \right) \quad (6)$$

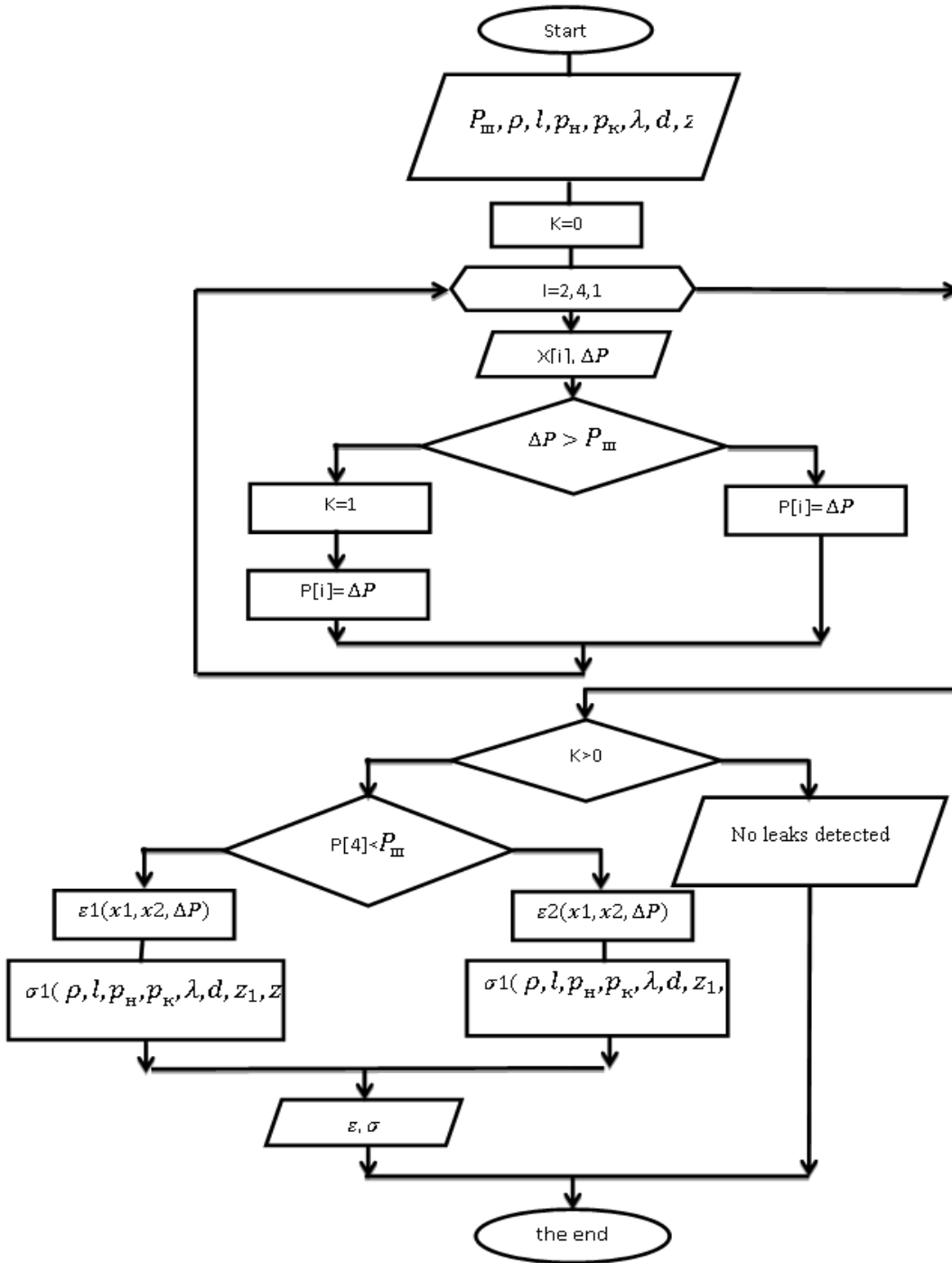


Fig. 4
Leak Detection Flow Chart

To implement this algorithm, a special program operates in the controller or at the top level. The program for the top level is presented on the example of the Pascal ABC programming language. To verify the correctness of the compiled mathematical model, an experimental setup is assembled, schematically presented in Figure 5.

The letters denote pressure sensors, fixed with the help of tees, imitating a pump-pumping station (NPS), the leak is simulated by opening a valve with a known angle of rotation of the valve.

Three possible options for the occurrence of leakage concerning pressure sensors D1-D2 are considered.

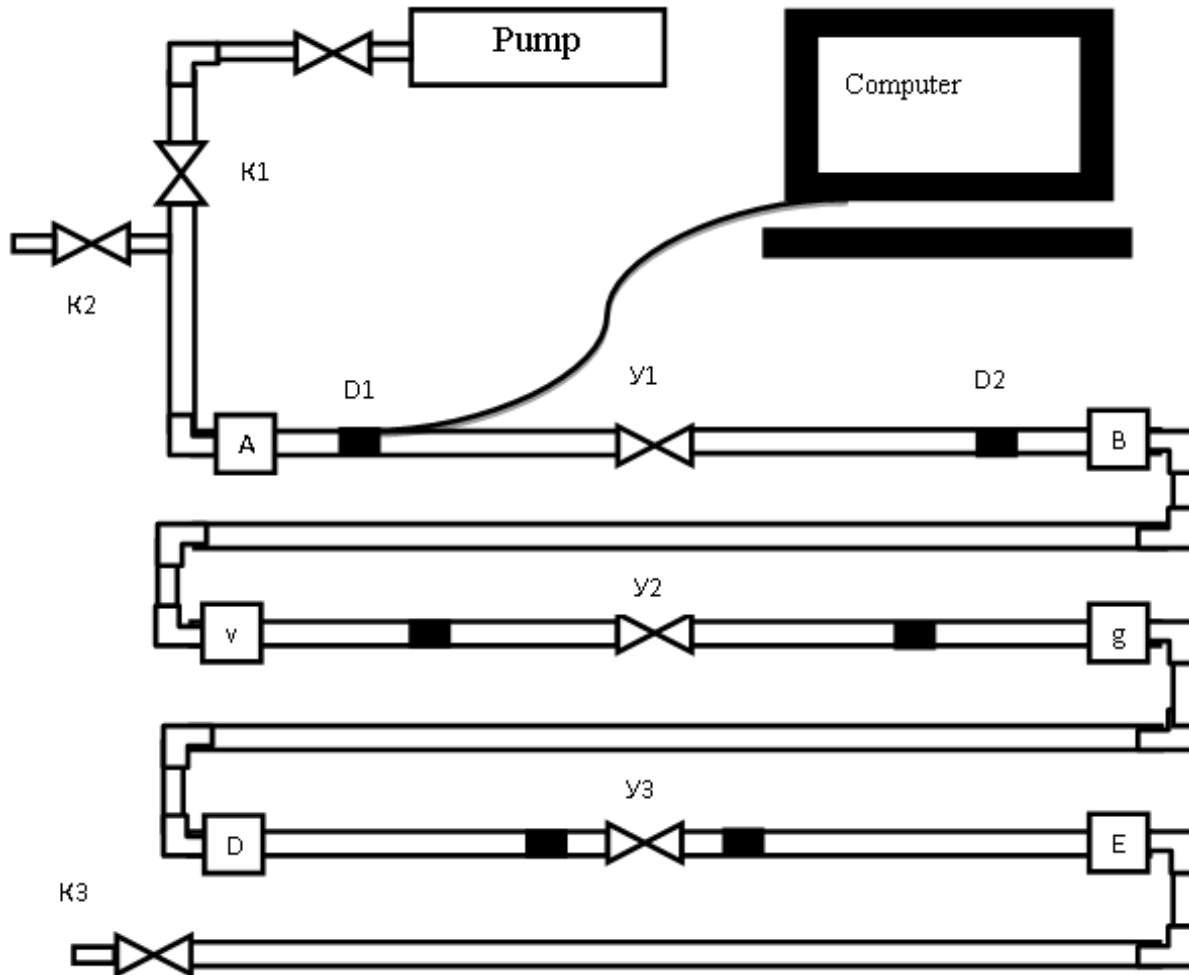


Fig. 5
The scheme of the experimental setup

Results

At the laboratory bench in the process of testing, the universal measuring transducer MTU - universal pressure gauge MTU-04.02. XX was used.

Information arrives at MIKON-827, for its reading on the experimental object a portable module was installed to collect information MSI-07, which can be connected via adapter AD-04 to the sealed connector of the sensor. The module records recorded information from the sensor into non-volatile memory. In experimental studies, a universal sensor was also connected to an electronic computer using a free COM port.

Monitoring the status of the sensor, launching it into operation and reading data from the instrument's memory is provided by a top-level program. In this case, the RS-485 protocol is used, and the unified port exchange rate is 9600 bps.

To normalize the signal of the serial interface of the microcontroller in the RS-485 standard, microcircuit-interfaces are used.

Measurement range (VPI) overpressure, MPa	2,5; 4; 6; 10; 16; 25; 40; 60; 100
Limits of the measurement channel error pressure in the range of operating temperatures, % of VPI	±0,25
Operating temperature range, °C	-40... 85
Temperature measurement range, °C	-20... 100
Limits of the allowed absolute error of the channel temperature measurement, °C	±0,5 (±0,25)
Measurement Resolution	1 c... 1 day
Power supply, V	3,6
Weight, kg, not more	1,8

Table 1
Technical specifications of the device

Discussion

An experimental study was conducted as follows:

The first stage: All taps are closed; the water is pumped through the pump through the open valve 1. At this time, valve 2 is closed and valve 3 is open. After the air is removed from the pipeline, taps 1 and 3 are closed and the pump is stopped.

The second stage: The pressure sensor is installed at the beginning of the simulation pipeline and its end at the required distance. On a computer, we launch a specialized program, we prepare sensors for recording signals using its initialization.

The third stage: In the receiver of the compressor we create the required pressure. When the valve 2 is closed, open the valve, which is located at the outlet of the compressor receiver.

The fourth stage: We start up our pressure sensor via a computer.

Fifth stage: When conducting experiments without leakage on the pipeline, taps U1-U3 always remain closed. We send a high-pressure impulse to the simulated pipeline. For several seconds, the pressure sensor records the change in pressure over time, and then stop it and shut off valve 2.

When conducting experiments with leakage, the required valve opens a couple of seconds before opening valve 2 and the device records the pressure change. A signal is given to the program, which calculates the coordinate and leakage flow.

Findings

During the experiment, the trunk section of the Kaleykino PS pumping station of Transneft Prikamyje JSC was modeled from the Kaleykino receiving point (PSP) to OPS 3 on a reduced scale with a length of 1500m. Input data on the object are presented in table 2.

Options	Data from PSP Kaleykino	Experimental data
Initial pressure	0,94 MPa	0,94 MPa
Final pressure	0,86 MPa	0,86 MPa
Fluid density	900kg/m ³	900kg/m ³
Pipeline Diameter	0,1m	01 m
The height of the sensors relative to each other	0, m	0, m
Pipeline resistance	0,005	0,001
Hydrodynamic noise level	3-5 Kpa	3-5 Kpa

Table 2
Data on the object OPS "Kaleykino"

The distance to simulated leakage in all 3 cases was 5.5 m

The installation coordinates of the pressure measurement device were as follows:

In the first case: $x_1 = 1$ m $x_2 = 9$ m

In the second case: $x_1 = 3$ m $x_2 = 7$ m

In the third case: $x_1 = 5$ m $x_2 = 6$ m

The resulting pressure drop graph is presented in Figure 6.

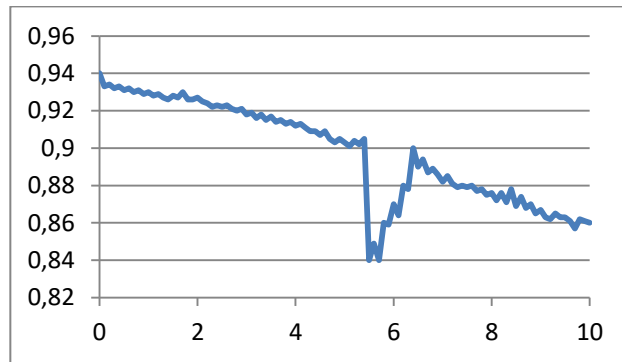


Fig. 6
Pressure drop curve

The results of the program for all the considered methods of installation of the device are shown in Table 3.

Sensor coordinates	ε, M	$\sigma, \text{KГ} / \text{c}$
The data obtained experimentally	5,5	6,460
Data received by the program		
$x_1 = 1 \text{ M } x_2 = 9 \text{ M}$	5,623	6,483
$x_1 = 3 \text{ M } x_2 = 7 \text{ M}$	5,656	6,520
$x_1 = 5 \text{ M } x_2 = 6 \text{ M}$	5,609	6,475

Table 3
The results

Evaluation of the accuracy of the method of determining the coordinates and flow rates of leakage are given in Table 4

	$x_1 = 1 \text{ M } x_2 = 9 \text{ M}$	$x_1 = 3 \text{ M } x_2 = 7 \text{ M}$	$x_1 = 5 \text{ M } x_2 = 6 \text{ M}$
$\delta_\varepsilon, \%$	0,224	0,284	0,198
$\delta_\sigma, \%$	0,356	0,929	0,232

Table 4
Evaluation of the accuracy of the method

Conclusion

Summarizing the results of the work, we can come to the following conclusions: the introduction of leak detection systems in pipeline transport is relevant since it allows to significantly reduce environmental damage from the spill of products and to minimize the time of forced downtime of the pipeline. The error in localizing leakage using the "pressure wave" method is minimal, which is a good result and confirms the adequacy of the model. However, when using this method on long pipelines, it is necessary to consider the possibility of increasing the absolute value of the error.

Acknowledgments

The work is performed according to the Russian Government Program of Competitive Growth of Kazan Federal University.

References

Belyaeva, V. A. Oil and gas construction. Under total. Moscú: OMEGA-L. 2008.

Bulatov, A. F. and Lyutov, A. G. Bulletin USATU. Ufa: USATU. 2013.

Kutukov, S. E. "The problem of increasing the sensitivity, reliability, and speed of leak detection systems in pipelines". Oil and Gas Business Vol: 2 (2004): 29-45.

Volkov, A. S.; Volkova, I. E., and Zemskov, P. A. "Proceedings of NSTU. R. bE. Alekseeva". N. Novgorod Vol: 5 num 107 (2014): 166-170.

CUADERNOS DE SOFÍA EDITORIAL

Las opiniones, análisis y conclusiones del autor son de su responsabilidad y no necesariamente reflejan el pensamiento de la **Revista Inclusiones**.

La reproducción parcial y/o total de este artículo debe hacerse con permiso de **Revista Inclusiones**.